



CRS

康复及个人健康展



CECN

国际养老展



家用医疗展

China International Rehabilitation and Personal Health Show (CRS)

China International Elderly Care and Nursing Show (CECN)

China International Home Care and Medical Supplies Exhibition (Life Care)

POST SHOW REPORT

28-31 Oct 2023

INTL EXHIBITIONS CENTER SHENZHEN

Hall **2.1** 馆



SHOW STATUS



Exhibition and conference area size

40,000m²

↑ 6% compared to 2022

Total number of visitors

302,963

↑ 73% compared to 2022

International visitors

139

Exhibitors

1000+

↑ 15% compared to 2022

Exhibitor rebooking rate

97%

Visitors recommendation rate

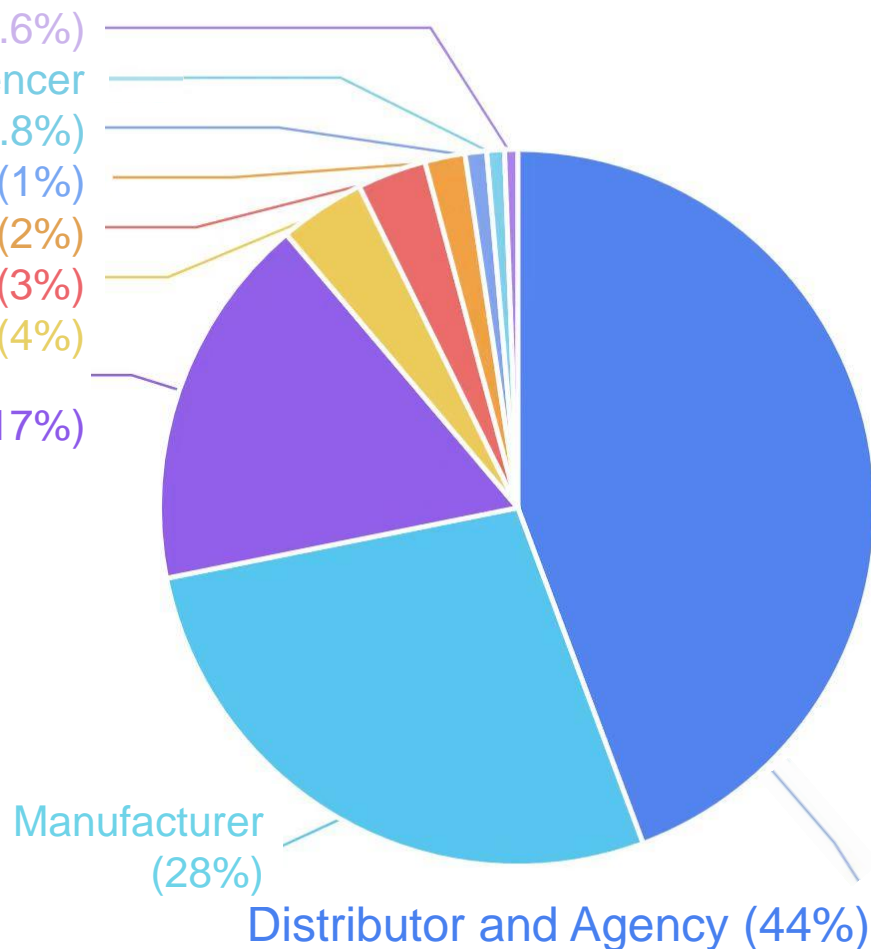
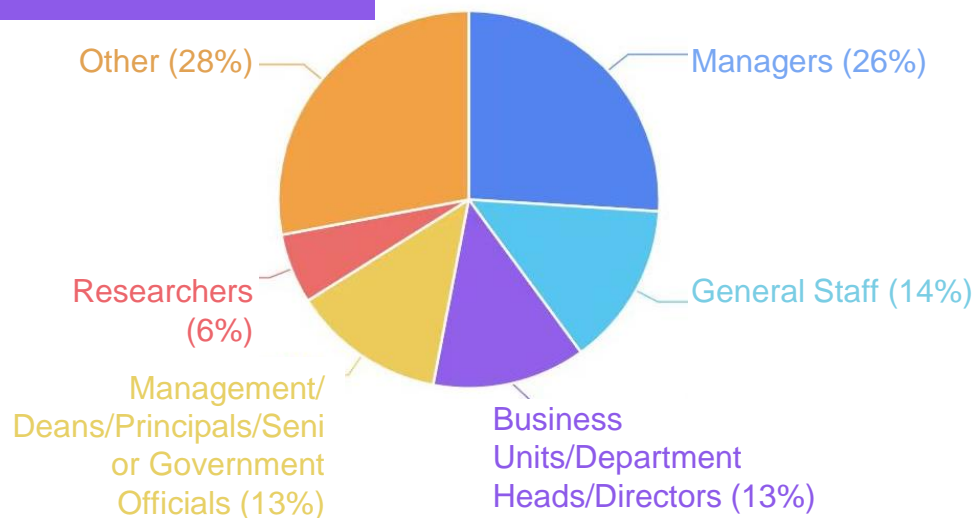
94%

VISITOR ANALYTICS

Visitors by Industry



Visitors by Position

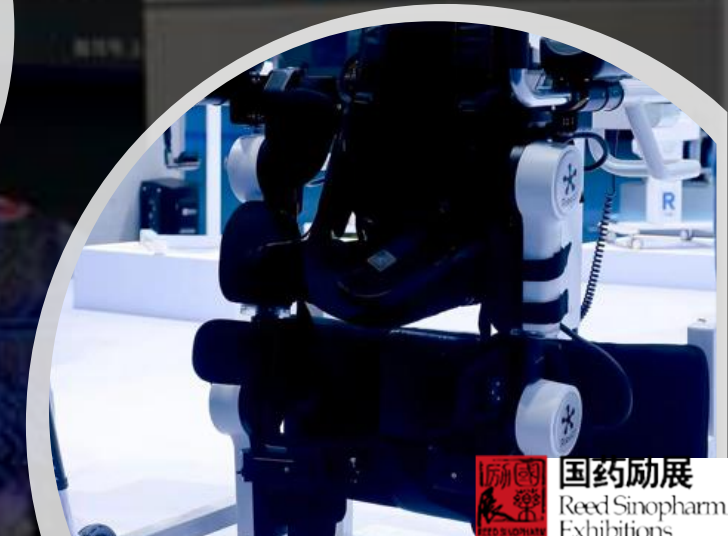


Exhibition Area Highlights

Highlight 1: Rehabilitation Robots Area

The rehabilitation robot area in the CRS show was **the largest** rehabilitation robot exhibition worldwide to date.

This area attracted nearly **40** companies and exhibited hundreds of new rehabilitation robot products.





- Brain-computer interface technology is the newest segment to emerge in the rehabilitation industry. At present, many medical institutions in China have successfully implemented brain-computer interface technology in patient rehabilitation.
- CRS curated a high-tech group of brain-computer interfacing technology at this exhibition site. The first products offering holistic solutions for interface neurorehabilitation were launched at this show.

脑电柔性贴片 Eeg flexible patch

是一款轻型医疗级柔性脑机接口设备，
无感佩戴，顶级脑电信号捕捉能力，便
携式设计，适用任意医疗场景



Highlight 2: Brain-Computer Interface High-Tech Zone

Highlight 3: Smart Elderly Care Area

This area showcased various elderly care products able to renovate aging communities and senior homes to holistically accommodate their needs.

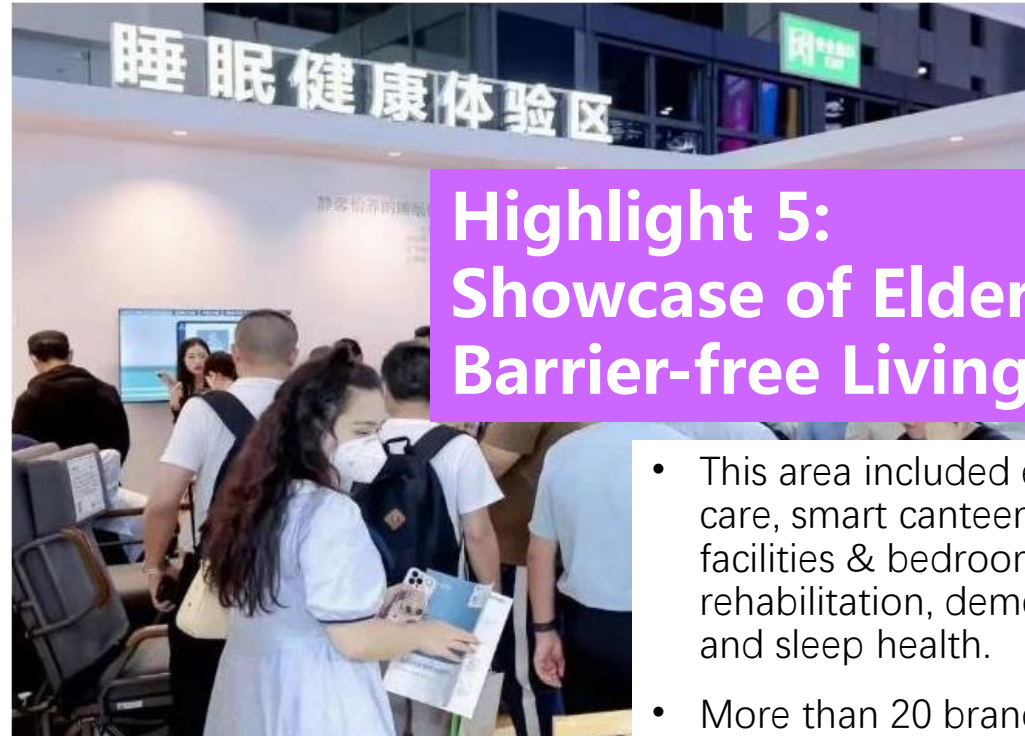
The site exhibited smart washing and care products, including portable hair washing machines, smart bathing robots and more. The smart bathing robot is capable of completing the entire bathing process within 6 minutes, including nanometer water discharge and sewage recycling, and can aid elderly in both seated and supine positions.



Highlight 4: Sleep Health & Mobility Aids Area

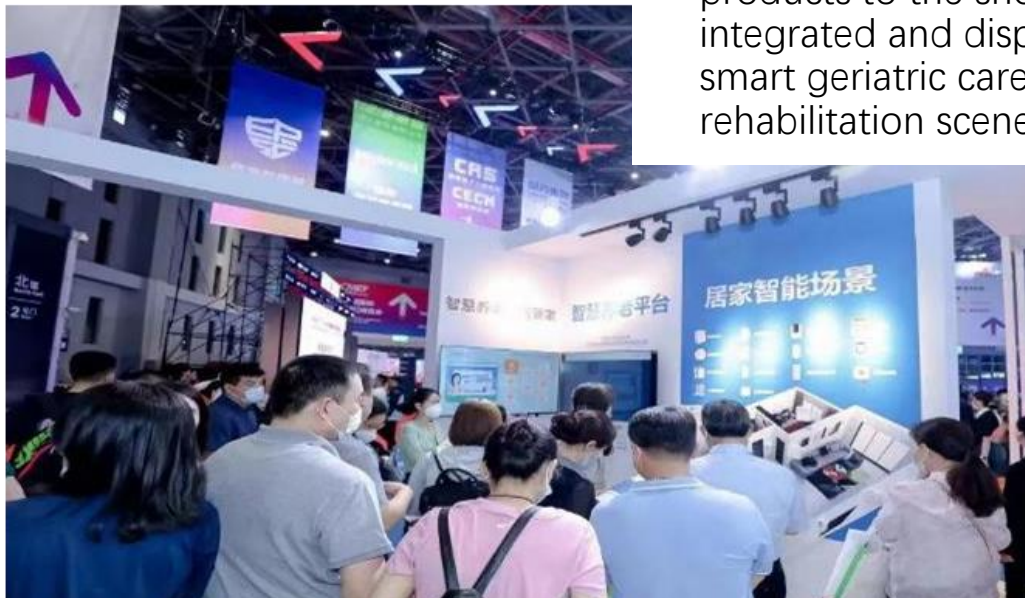
- This area provided a diverse range of products, including wireless data management systems, monitoring systems, and non-invasive insomnia sleep therapy devices. Gyromagnetic therapy devices, sleep pillows, sleep sprays, sleep aromatherapy products, music sleep aid mattresses, sleep bedding and other products that monitor intervention and sleep aid functions were also showcased there.





Highlight 5: Showcase of Elderly-oriented Barrier-free Living

- This area included exhibitions on elderly care, smart canteens, elderly bathroom facilities & bedrooms, general geriatric rehabilitation, dementia rehabilitation, and sleep health.
- More than 20 brands brought 60 products to the show. This showcased integrated and displayed aging suitability, smart geriatric care scenes, and rehabilitation scenes.



EXHIBITOR QUOTES



CRS & CECN is the largest medical equipment exhibition in China as well as a domestic and international display platform. Yikang has fully supported and closely cooperated with the rehabilitation and elderly care sector organizer since the launch of the rehabilitation robot display zone. CRS & CECN is not only a critical platform on which Yikang can display new technologies and products to both industry and customers, but also a communication platform where the company can engage with the most advanced scientific and technological achievements in the rehabilitation medical industry.

-----Xing Jinqiu, General Manager, Guangzhou Yikang Medical Equipment Industry Co., Ltd.



CMEF is one of the most important events of the year. This year, we've met a lot of new distributors, related organizations and even end users. The show also offered the opportunity to initiate a host of new partnerships.

-----Niki, Marketing Manager, Sunrise Medical



We have been in attendance since the inaugural show. The show offers the opportunity to learn about industry trends and new developments. CRS & CECN is a global communication platform. It has helped us greatly with our own development, as we transformed from a small factory to a professional manufacturer of decubitus prevention products, working with more than 100 countries worldwide. We find the exhibition deeply important and will continue to participate.

-----Su Zhaosheng, President of Yuehua Medical



For foreign brands looking to break into the Chinese market, attending a trade show is definitely the fastest and most direct means for exposure. As the most influential and well-known trade show in the healthcare industry, CRS & CECN has provided us with many new high-quality customers and partners, contacts with governmental organizations and media, and information about the latest industry developments. We can't wait to participate in the next one!

-----Nancy Du, Marketing, Stiegelmeier



We are honored to have been an exhibitor at this event. At the top medical equipment exhibition platform, we were able to showcase domestically produced brain-computer interface technology and products. We were also able to help huge amounts of industry elites and enterprises understand these products better. We are very grateful for this platform. Through it, China's medical industry can keep up with the pace of international development, and display to the world the preeminence of scientific and technological developments in China's medical industry. We hope that CRS/CECN medical will continue to pave the way for excellence amongst domestic enterprises and elites, pushing them to the forefront of the industry. ---Qun Sun, Marketing Manager, ZhenTec

ABOUT THE VENUE

Shenzhen is a sub-provincial city of Guangdong province in the south of China, situated next to Hong Kong.

Shenzhen is a center of foreign investment and since the late 1970s has been one of the fastest growing cities in the world. It is also the busiest port in China after Shanghai. In the past two decades, outsiders have invested more than \$30 billion in building factories and forming joint ventures in Shenzhen.

The Shenzhen International Exhibition Center is adjacent to Shenzhen Airport, at the intersection of Guangdong-Hong Kong-Macao Greater Bay Area, the Pearl River Delta center and the Guangdong Free Trade Zone. It has significant resources in close proximity and huge development potential.



CONTACT US



SCAN OUR WECHAT

Ms. Lingfei Kong

Project Manager

Phone: 010-84556614/13811705252

Email: lingfei.kong@reedsinopharm.com



SCAN OUR WECHAT

Mr. Liang He

Sales Supervisor

Phone: 010-84556652/15811190216

Email : liang.he@reedsinopharm.com